

# Top Tube Snack Bag

## Cut and Sew Instructions

### Description

[www.LearnMYOG.com](http://www.LearnMYOG.com)

31 December 2019

Created by u/g8trim

A handy top tube bag for commuters, bikepackers, and century riders. Keep snacks, small valuables, and tools at the ready with this beginner friendly pattern. Attaching to the stem and top tube with hook and loop, this bag is stable when riding and easy to open and close with one hand. Final dimension are about 8" long, 3.5" tall, and tapers from 3" at the stem to 1.5" near the rider's knees.

### Preparations

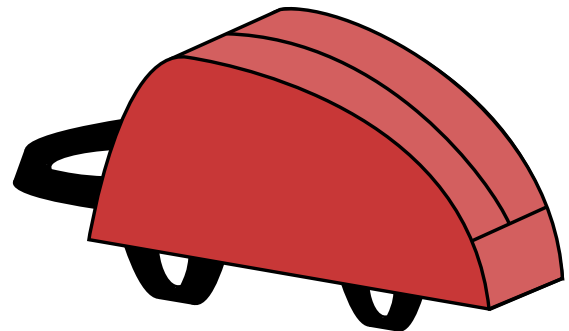
Print the pattern on US Letter (8.5 x 11) paper. It is very important to print at 1:1 scale. Where applicable, the pattern will print on multiple pages. Arrange the pages matching up the numbers and letters (e.g. 1B to 1B). Cut or fold one of sides and match the edge to its corresponding side. Then, tape together and cut out the pattern shapes.

Trace the pattern pieces from the pattern sheet onto the wrong side of the fabric. Note: see instructions regarding top panel.

Standard seam allowance is 1/2 inches throughout unless otherwise stated.

### Assembly Instructions

1. Prepare fabric panel per Preparations and mark fold lines on wrong side.
2. The top panel pattern is the final shape. Start with a fabric panel 5" by 7.75". Cut in half lengthwise. Attach zipper in middle of panel. Top stitch along teeth. Trim to match top panel pattern shape provided.
3. Attach velcro loops to bottom panel. Adjust for bike headset and stem as needed.
4. Wrong sides out, attach bottom panel and top panel at each end.
5. Wrong sides out, align Seam Marks A-D and pin. Attach side panels to top and bottom panels.
6. Bind edges. Flip right side out. Attach to bike and go outside for a long bike ride!



### Materials

One zipper, YKK #3 or #5, atleast 7" long  
Fabric panels, stabilized if desired  
Velcro or One-Wrap hook and loop  
Lining fabric, if desired  
Optional: Pull cord, webbing loops, and key clip

Fabric recommendations:  
PU Coated Nylon or Silnylon  
X-PAC VX07

### Symbols

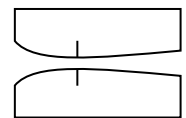
#### Fold Line

A broken line indicates the fold edge of a double layer of fabric. A broken line pattern edge must be placed on a fold and not cut.



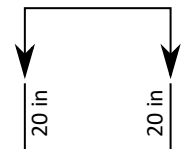
#### Seam Marks

Shown on curved or long seams, these small lines perpendicular to the cutting line indicate edges to be matched. Align the seam marks to one another.



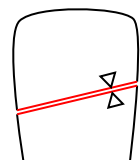
#### Lengthening

For long pattern pieces, this symbol indicates you must lengthen the piece before cutting. Lengthen the pattern from the point of arrow by the amount indicated.



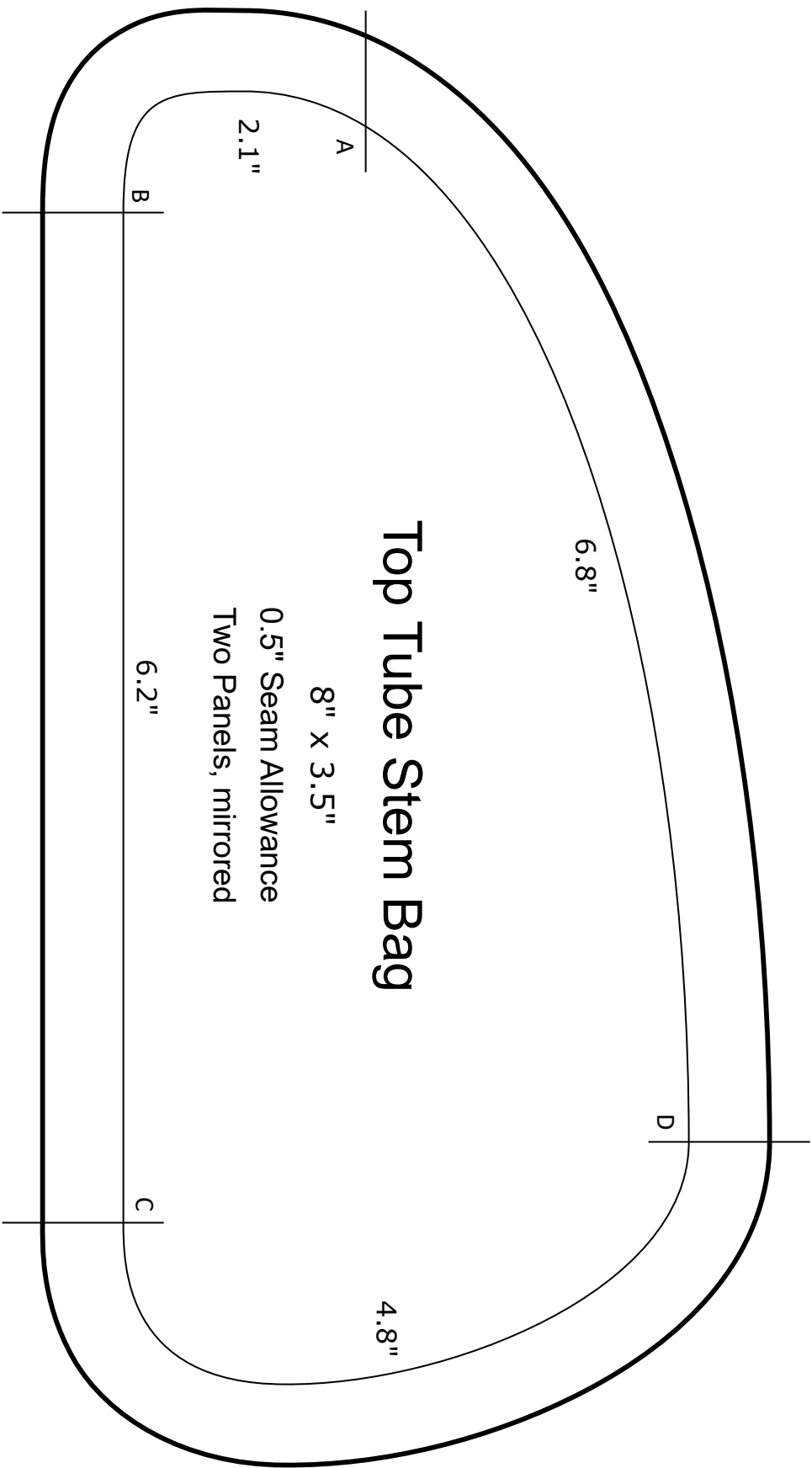
#### Joining Line

Large pattern pieces must be taped together after they have been traced on paper. Red colored lines indicate matched edges. Small triangles indicated alignment points.

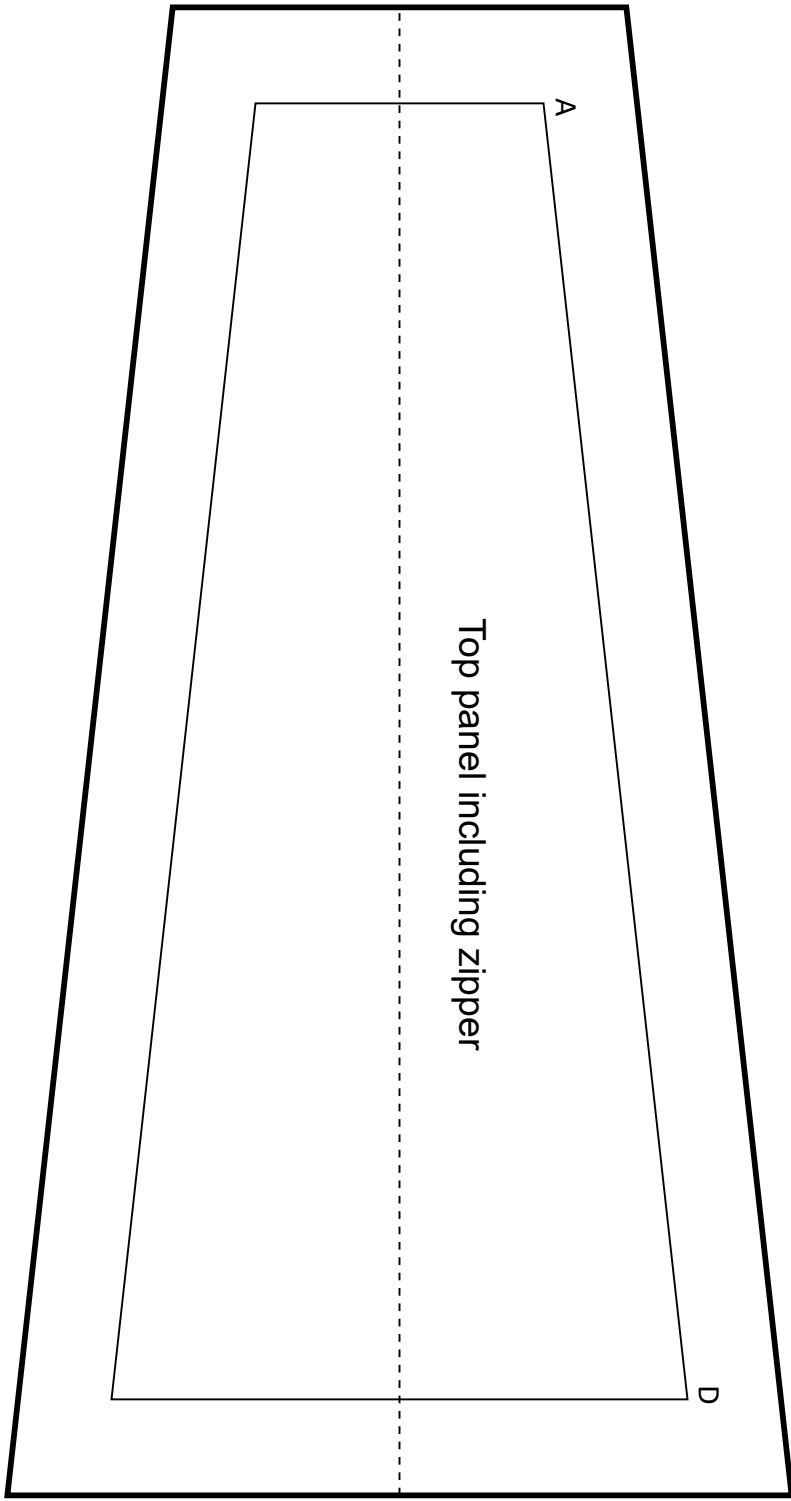


# Top Tube Stem Bag

8" x 3.5"  
0.5" Seam Allowance  
Two Panels, mirrored



1A

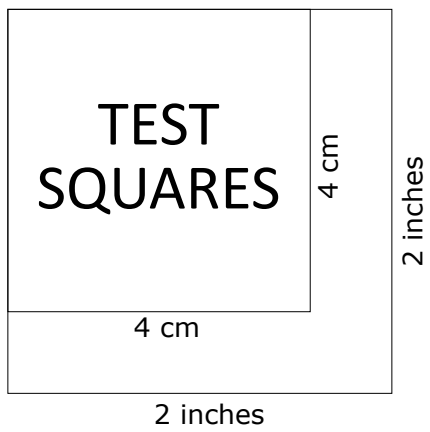
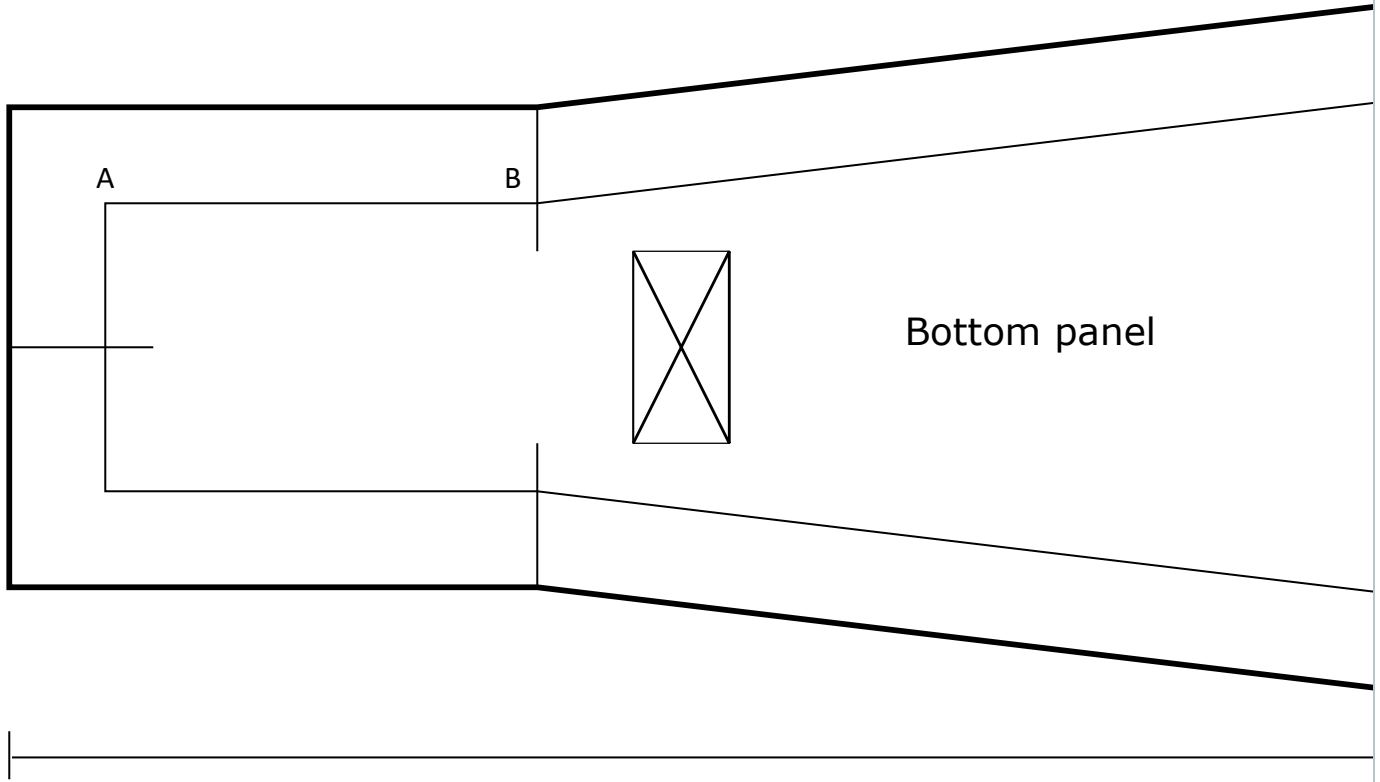


Top panel including zipper

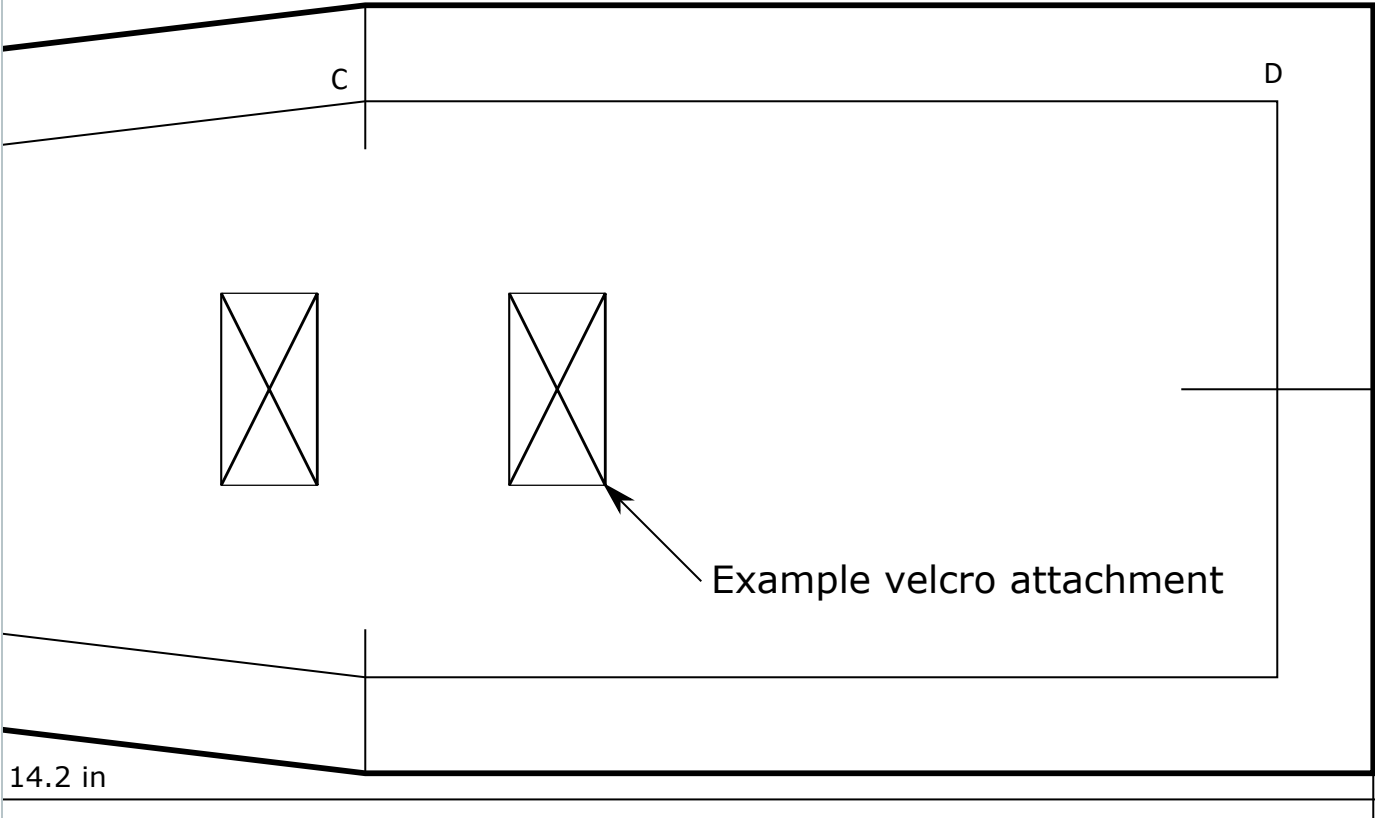
A

D

2A



2B



3A